



European
Commission

Construction and demolition waste management in the EU





European
Commission

The starting point: waste management in the EU

EU waste legislation

European

**Waste Framework
Directive
2008/98**

(Includes Municipal and Construction
Demolition waste)

**Waste Shipment
Regulation
1013/2006**

Framework

Treatment

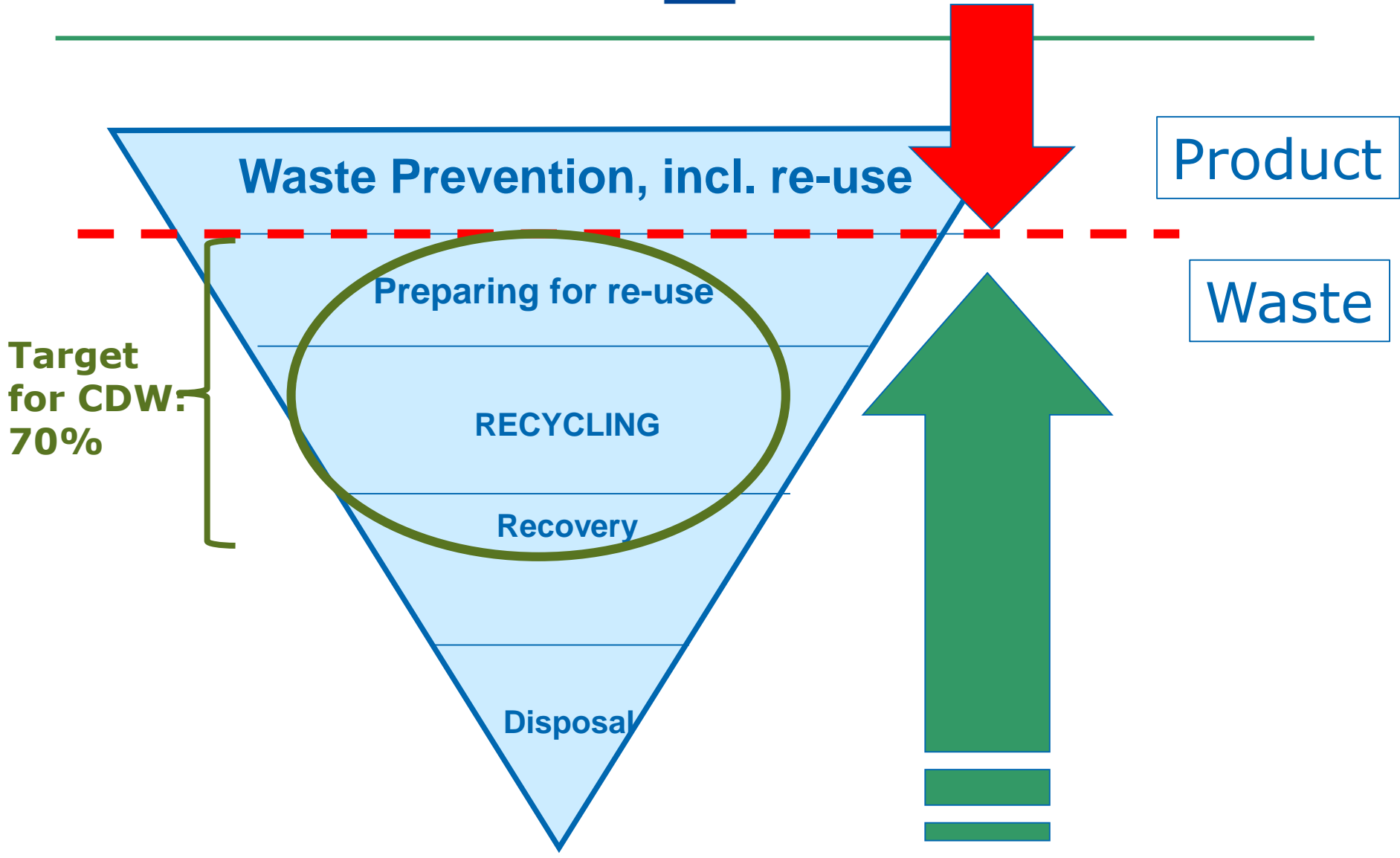
Streams

**Industrial Emissions
Directive (Waste Incineration)
2010/75**

**Landfill Directive
1999/31**

**Mining Directive
2006/21**

Sewage Sludge 1986/278	Packaging 1994/62	PCB/PCT 1996/59	ELV 2000/53	Batteries 2006/1013	ROHS 2 2011/65	WEEE 2 2012/...
-----------------------------------	------------------------------	----------------------------	------------------------	--------------------------------	---------------------------	----------------------------



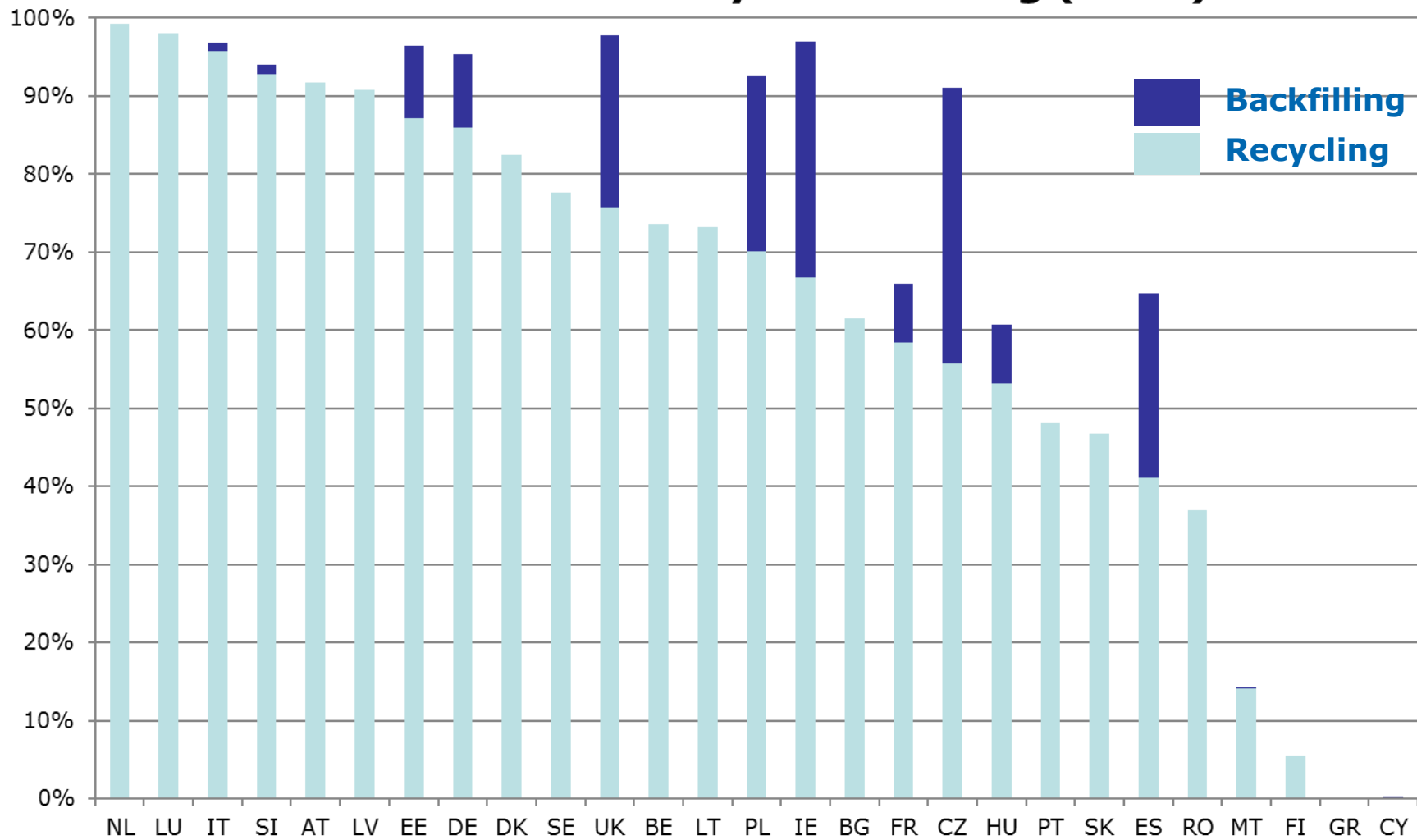
CDW: Current situation

- Low level of regulation at EU level: Art. 11 WFD
 - Material recovery: at least 70 % (by 2020)
 - Including backfilling
- Accuracy and reliability of statistics?
- High potential for recycling of CDW in principle
- EU recovery target has led to an improvement
- Implementation problems:
 - Identification and treatment of hazardous waste
 - In some MS: Illegal landfills

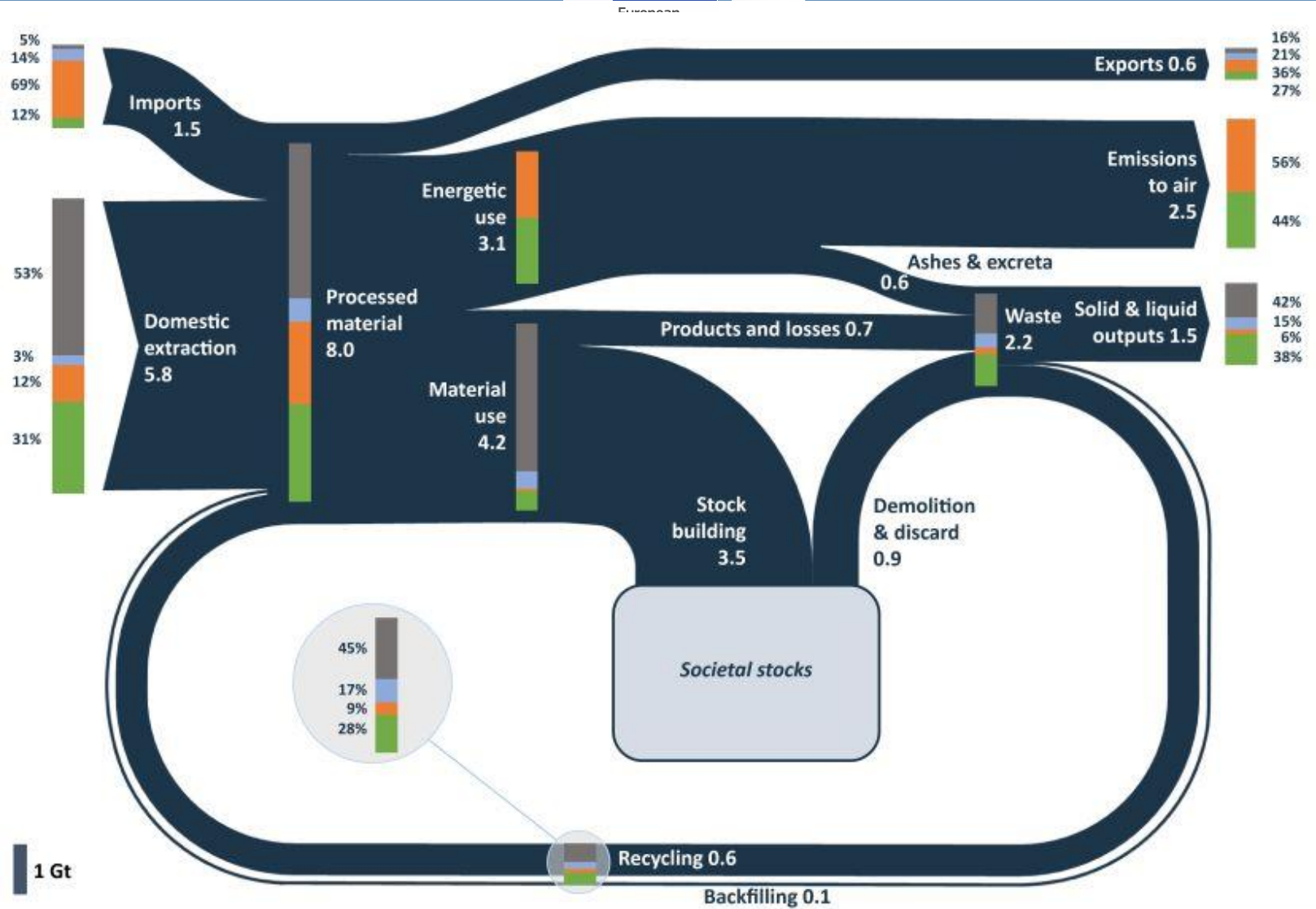
CDW Statistics

European
Commission

CDW: Material recovery & backfilling (2011)



A circular economy?



Material flows true to scale in Gt/year (billion tons/year) in 2014

Non-metallic minerals
 Metal ores
 Fossil energy materials/carriers
 Biomass

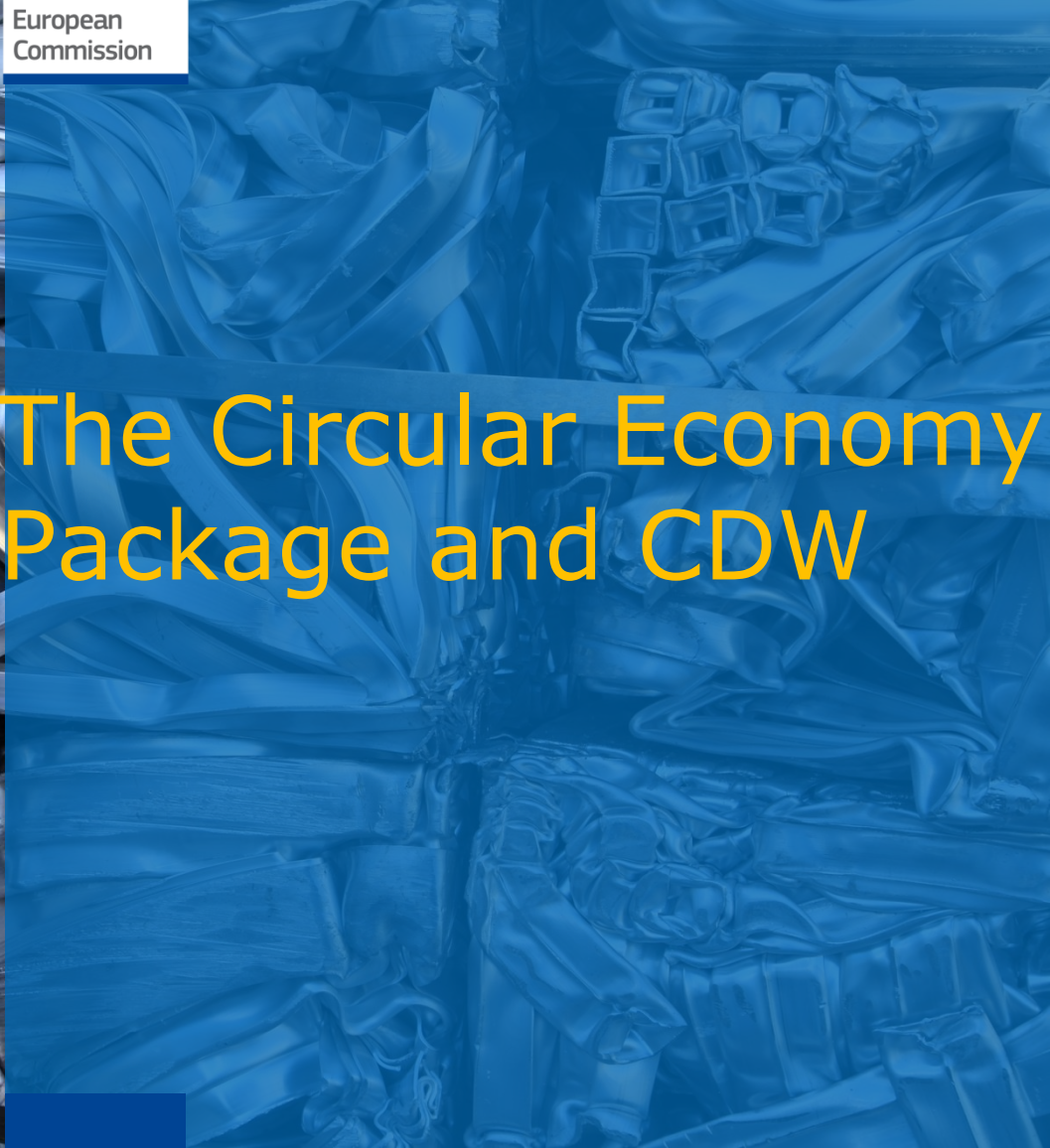
Note: Numbers may not sum up to total due to rounding.



European
Commission

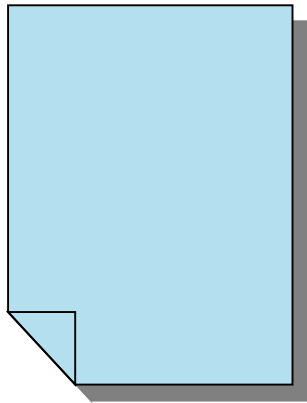


The Circular Economy Package and CDW

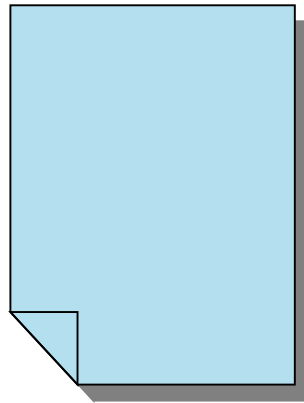


The Circular Economy Package

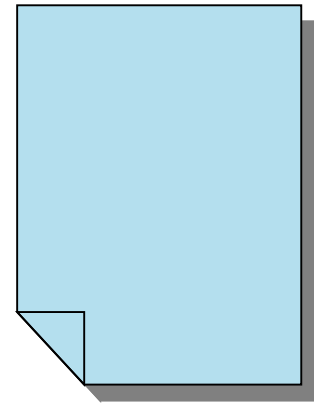
- Circular Economy Package adopted by the Commission in Dec 2015
- Waste Package to be adopted in Apr 2018



**Action Plan
Communication**



**List of Follow-up
Initiatives (Annex)**



**Legislative
proposals on waste**



Waste package – general

Waste in general:

- Measures to promote **waste prevention**
- Recycling targets for **municipal waste** and **packaging waste**
- **Extended separate collection for municipal waste**
- **Landfill diversion targets** for municipal waste
- Minimum requirements for **EPR schemes**



Waste package - CDW

Prevention:

- MS shall take measures to prevent waste generation, incl.:
- Promote sust. production + consumption models
- Promote reuse and repair [..]
- Reduce waste generation in processes related to [..] construction and demolition



Waste package - CDW

Definitions:

- CDW
- Backfilling

Selective demolition and sorting:

- MS to take measures to promote selective demolition
- MS to ensure the establishment of sorting systems for CDW for at least: wood, mineral, metal, glass, plastics and plaster.'



Waste package - CDW

Statistics:

- Backfilling to be reported separately

Follow-up:

- Guidance: Backfilling
- By the end of 2024, Commission shall assess whether a Preparation for reuse + recycling target shall be set (overall and/or for specific materials)



Sustainable construction: Actions

Completed measures:

- Study on CDW at EU level (2017)
- Guidance: **CDW Management Protocol** (2016)
- Guidance: **Pre-demolition Audit** (2017)
- **Level(s)**: environmental performance of buildings (2017)
- Study: **Business models** and financing of recycling facilities (2017)

Ongoing and planned measures:

- **Quality standards** for secondary raw materials
- **Interface product /waste legislation**
- Implementation: Compliance promotion

